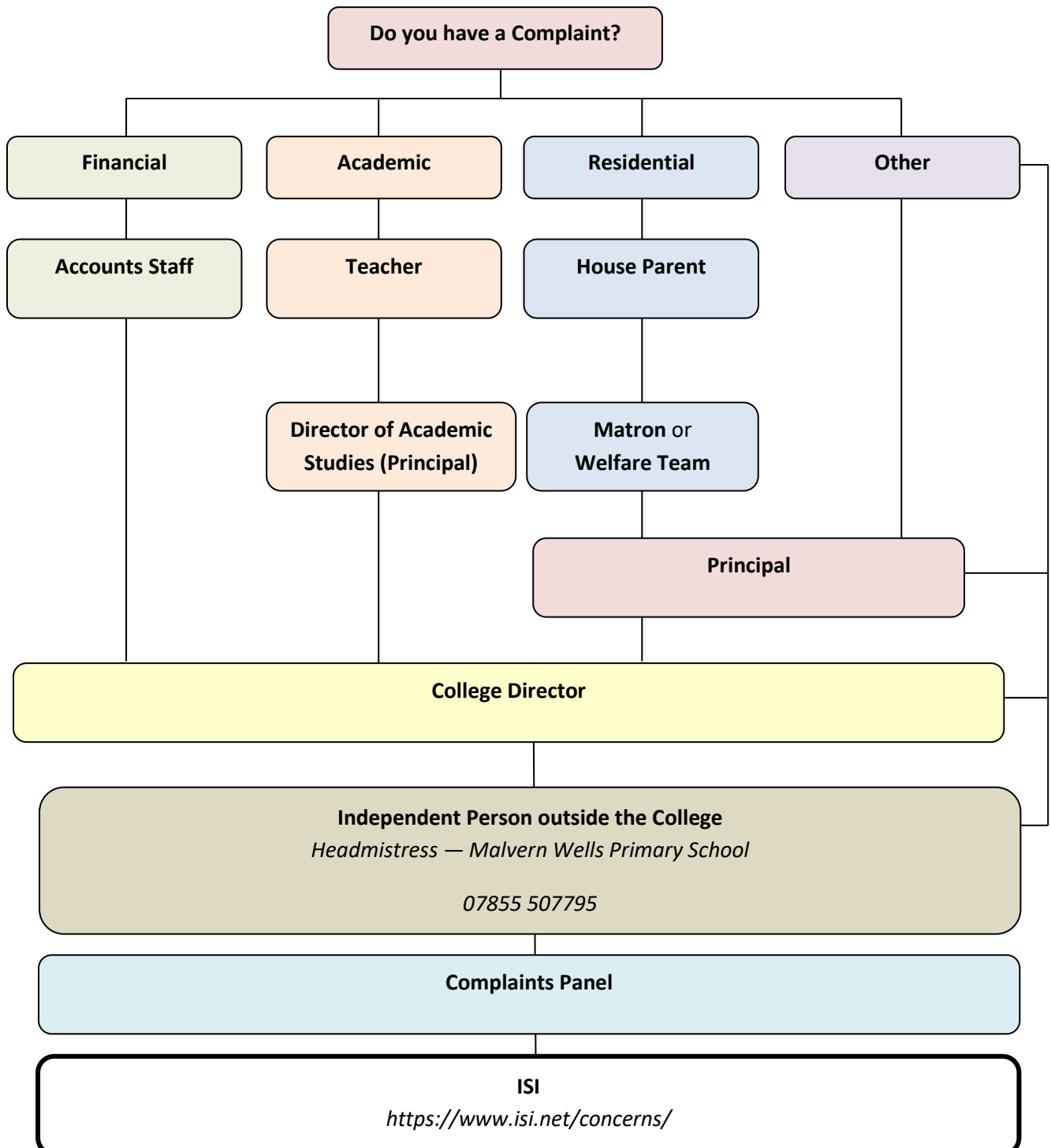




Complaints Procedure

If you have a problem/complaint, it is very important that you let a member of staff know about it so we can try to help you.

The following chart explains the step by step procedure.



Produced by: CS Date: 08/03/2016 Checked by: GM Date: 26/02/2024 Approved by: MN Date: 26/02/2024



ABBHEY COLLEGE IN MALVERN

Produced by:	CS	Date:	08/03/2016	Checked by:	GM	Date:	26/02/2024	Approved by:	MN	Date:	26/02/2024
--------------	----	-------	------------	-------------	----	-------	------------	--------------	----	-------	------------

Abbey College in Malvern Ltd (Number 08661073)

Registered in England and Wales. Registered office: 253 Wells Road, Malvern Wells, Worcestershire, WR14 4GF
Member of ENGLISH UK, Accredited by the British Council for the teaching of English as a Foreign Language, DfES Reg. No. 8856026